



Oakswood College

Empowering Through Education



Emergency Student Exclusion or Suspension

Procedural Flowchart

PROMOTING EXCELLENCE • ENSURING COMPLIANCE
SUPPORTING OUR COMMUNITY



GOVERNANCE



QUALITY

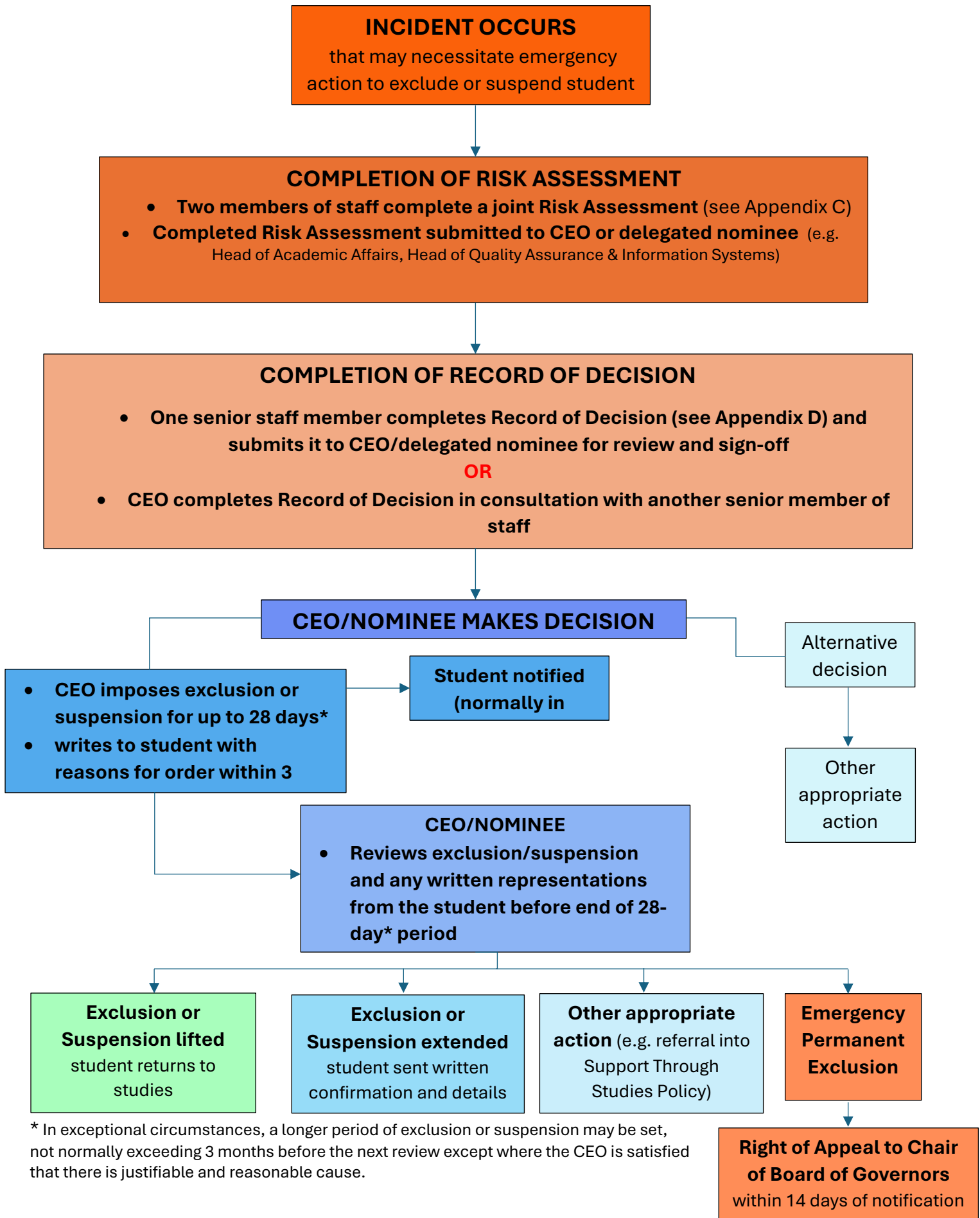


COMPLIANCE



EXCELLENCE

Appendix A: Emergency Student Exclusion and Suspension Procedural Flowchart



* In exceptional circumstances, a longer period of exclusion or suspension may be set, not normally exceeding 3 months before the next review except where the CEO is satisfied that there is justifiable and reasonable cause.